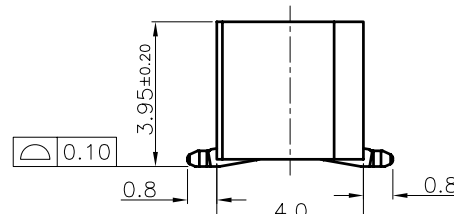
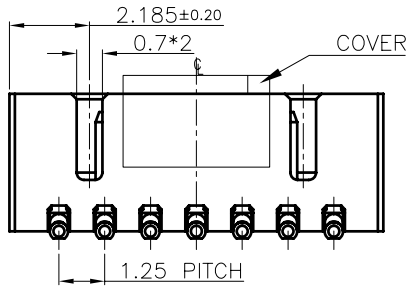
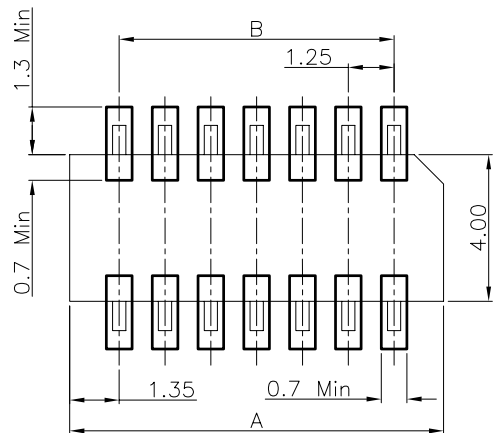


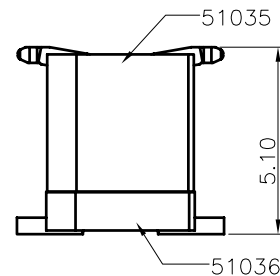
WITH COVER



WITHOUT COVER



RECOMMENDED PCB LAYOUT
GENERAL TOLERANCE ±0.05



MATING DRAWING

NOTES:

- MATERIAL:
 - HOUSING: THERMOPLASTIC, HIGH TEMP., UL94V-0;
 - CONTACT: COPPER ALLOY
- FINISH:
 - CONTACT:
 - N: 100~200u" MATTE TIN PLATING OVERALL
 - 50u" MIN. NICKEL UNDERPLATING OVERALL
- REFLOW SOLDER CAPABLE TO 260°C PER ACES SPEC.
- SPEC. PLS. REFER TO PS-51035-xxxxx-xxx
- PACKAGE PLS. REFER TO 51035-XXXCR-XX-TRP
- PART NUMBER

51035-XXX X X-XXX

NO OF CKT	XXX	HOUSING COLOR	COVER COLOR
	001	BLACK	NATURAL
PACKING	PLATING	002	NATURAL
			BLACK

N: MATTE TIN PLATING OVERALL
7:TAPE & REEL WITH COVER

CKT	Dim A	Dim B
14.00	10.20	7.50
16.00	11.45	8.75
18.00	12.70	10.00

一般公差 TOLERANCES X ±0.5 XX ±0.15 X ±0.25 .XXX ±0.1 ANGLES ±2°		宏致電子股份有限公司 Aces Electronics Co.,Ltd.	
檢驗尺寸標示 SYMBOLS INDICATE CLASSIFICATION DIMENSION	品名 (TITLE) 1.25mm BTB D/R PLUG SMT S/T TYPE	製圖 (DR) 14/09/16 審核 (CHKD) DAVID	YANGYANG
MARK IS CRITICAL DIM. MARK IS MAJOR DIM.	圖號 (DWG NO.) 51035-XXXXX-XXX	核准 (APPD) FRANK	
表面處理 (FINISH)	比例 (SCALE) 5:1	單位 (UNITS) mm	張數 (SHEET) 1 OF 1 尺寸 (SIZE) A4 版次 (REV) A